

# Miniature landscape with houses

**Instructions No. 2975**

Difficulty: Beginner 🍃🍃🍃🍃

Working time: 2 Hours

Use this idea to create a detailed and aesthetic decoration in the zinc bowl. This is particularly suitable for spring or as a charming home accessory.



## How to create the miniature landscape

### flower arrangement foam

Start by filling the **zinc bowl** with **flower arrangement foam** and cover it generously with **sheet moss**.

flower arrangement foam plate moss is a firm, porous material that does not only serve as a filling. Flowers and leaves can be easily inserted and remain securely stuck in the filling.

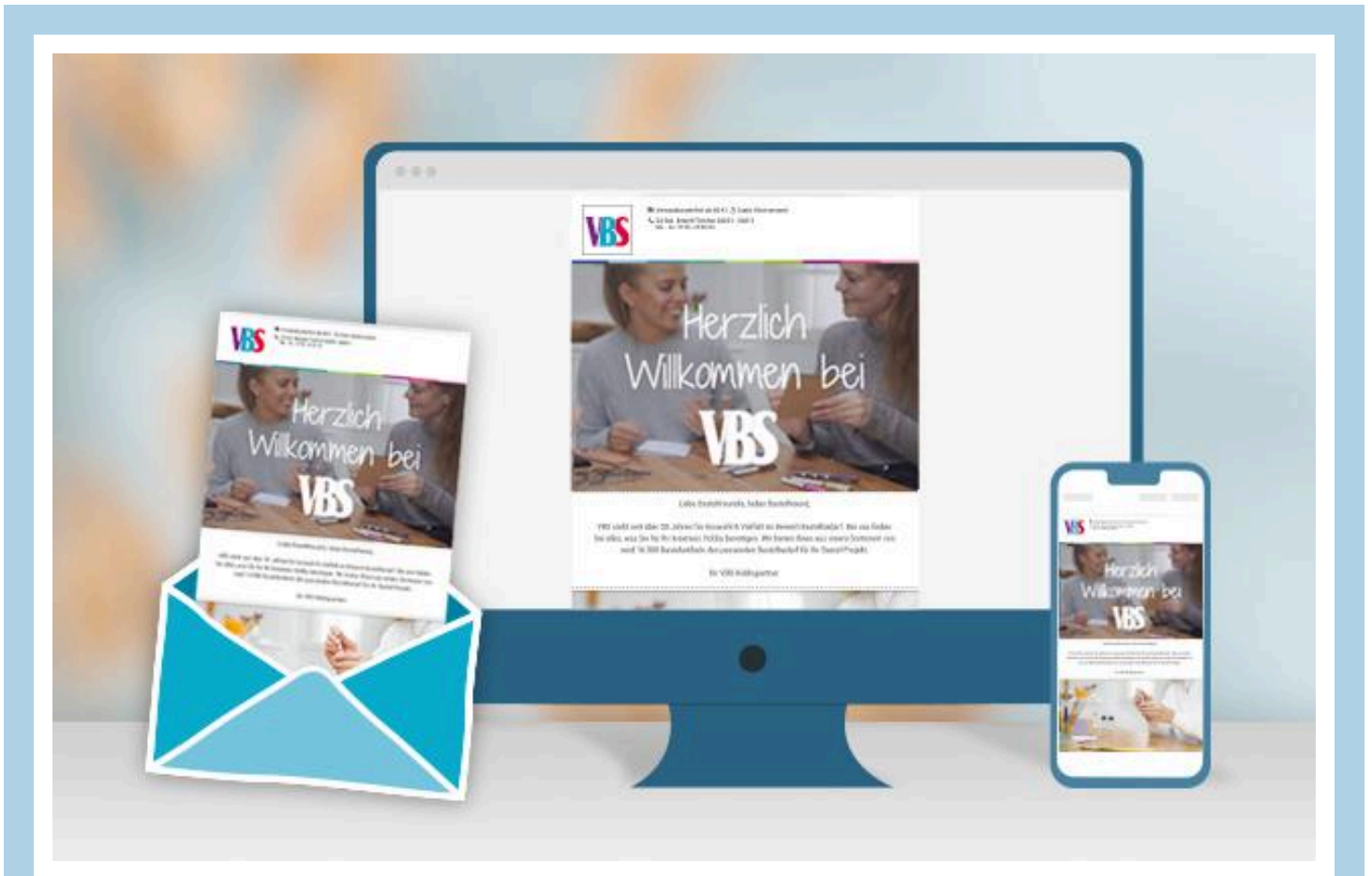
### Houses and accessories

Paint the **small houses** with **craft paints** according to your personal taste. Then use some **hot glue** to attach the painted houses securely to the moss .

Use your hot glue gun to attach other **miniature accessories**, for example from the "Landscape" crib accessories, to the moss.

## Flowers and grasses

Flowers and grasses give your decoration a floral accent. Cut the **artificial flowers** to the desired length. Use a **side cutter** for this. Then arrange them in the flower arrangement foam zinc bowl.



## New instructions

Straight to your inbox every week

register now >

Article information:

<b>Article number</b>	<b>Article name</b>	<b>Qty</b>
23098	Zinc bowl, Ø 22 cmWhite	1
12025	VBS House silhouettes "Mini"	1
560078-69	VBS Craft paint, 15 mlBeige	1
27474	VBS Craft paint, 50 mlAntique Rosé	1
27509	VBS Craft paint, 50 mlOlive	1
27477	VBS Craft paint, 50 mlYellow	1
607148	Plate moss, 50 g	1
20947	Succulents mix	1
15459	Eucalyptus Cinerea prepared	2
22605	VBS Flower bunch "Bloswen"	1
601405	Wet-Flower arrangement foam, 2 pieces	1
133319	Scalpel, approx. 15 cm	1
970020	VBS Side cutter	1